

INSTRUCTIONS FOR USE

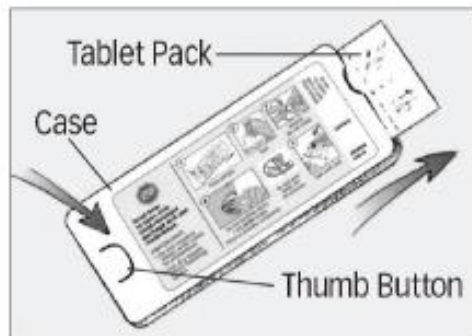
Asenapine Sublingual Tablets

Read these Instructions for Use before you start using asenapine sublingual tablets and each time you get a refill. There may be new information. This leaflet does not take the place of talking to your doctor about your medical condition or your treatment.

IMPORTANT:

- For sublingual (under your tongue) use only
- Do not remove tablet until ready to administer.
- Use dry hands when handling tablet.

Your asenapine sublingual tablets



Directions for Taking your Asenapine Sublingual Tablets:

Step 1. Firmly press and hold thumb button, then pull out the tablet pack (see Figure A). **Do not cut or tear the tablet pack.**

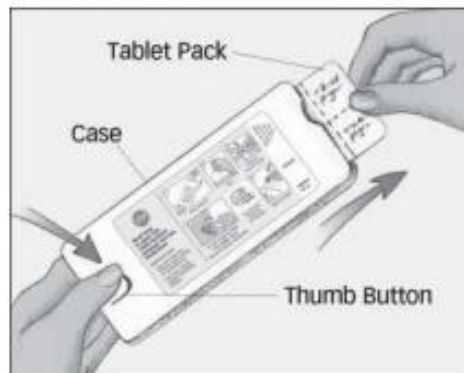


Figure A

Step 2. Peel the paper backed lid foil where “PEEL HERE” is given on the blister. (see Figure B).

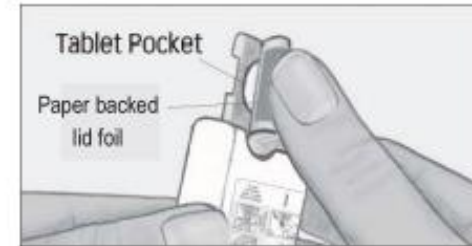


Figure B

Step 3. Gently remove the tablet (see Figure C). **Do not split, cut or crush the tablet.**

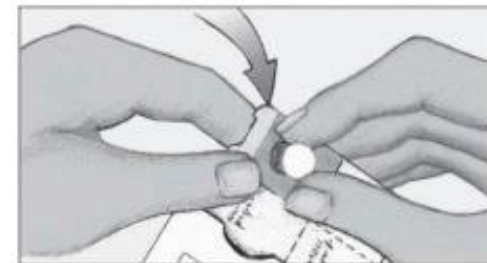


Figure C

Step 4. Place the **whole** tablet **under** tongue and allow it to dissolve completely (see Figure D).



Figure D

Do not chew or swallow the tablet.
Do not eat or drink for 10 minutes (See Figure E).